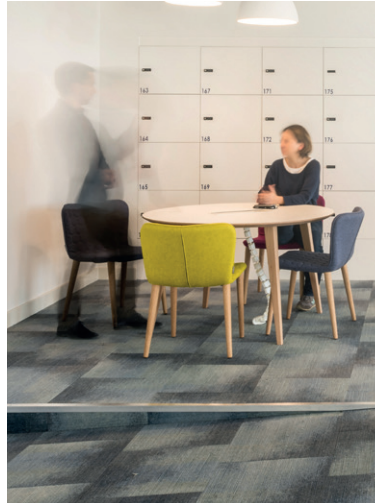


MANGLAR

DESIGN
COLLECTIVE

COSTA RICA, JULY 2021

01.



FIRM CAPABILITIES

- Introduction
- Services and Sectors
- Geographical coverage

02.



RELEVANT PROJECTS

- Project description
- Project size

03.



PROJECT TEAM

Organizational chart

Key members

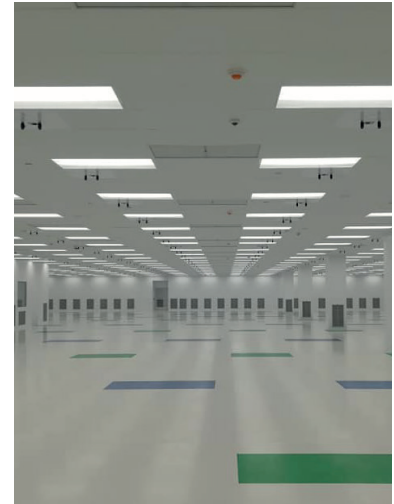
04.



PROJECT UNDERSTANDING

Methodology

05.



OUR TEAM KEY ATTRIBUTES

Why us?



10

FIRM CAPABILITIES

A joint venture of specialized consulting firms that offer integral solutions for various project challenges and customer needs.

MANGLAR is a collective of specialized design firms with outstanding experience in the fields of project management, design and customer service.

It is formed by the joint venture of 3G Office Costa Rica, AEG, Apame, Estruconsult and Bosque to create a multidisciplinary, structured, and professional team that blends the vast experience of each company to create bespoke solutions for our customer's needs.





20
Years of experience

25
Countries around the world

3000
Projects

We help our customers to achieve the highest levels of quality within the budget and time frame of the project.

The integral approach of each project provides an outstanding solution to each customer goals.



Services

CONSULTING
ARCHITECTURE
ELECTRICAL ENGINEERING
STRUCTURAL ENGINEERING
MECHANICAL ENGINEERING
CIVIL ENGINEERING
NOISE CONTROL
LIGHT SIMULATION
RENDERING
3D MODELING
BIM PROJECTS
COMMISSIONING
TEST AND BALANCE
BRANDING
SIGNAGE & WAYFINDING
PROJECT MANAGEMENT
LEED/WELL/EDGE CERTIFICATIONS

Sectors

INDUSTRIAL
COMMERCIAL
RETAIL
HOSPITALITY
CORPORATE
EDUCATIONAL

Mission





Establish an architectural and engineering key partner which provides innovation and tailor made solutions to our customer challenges.

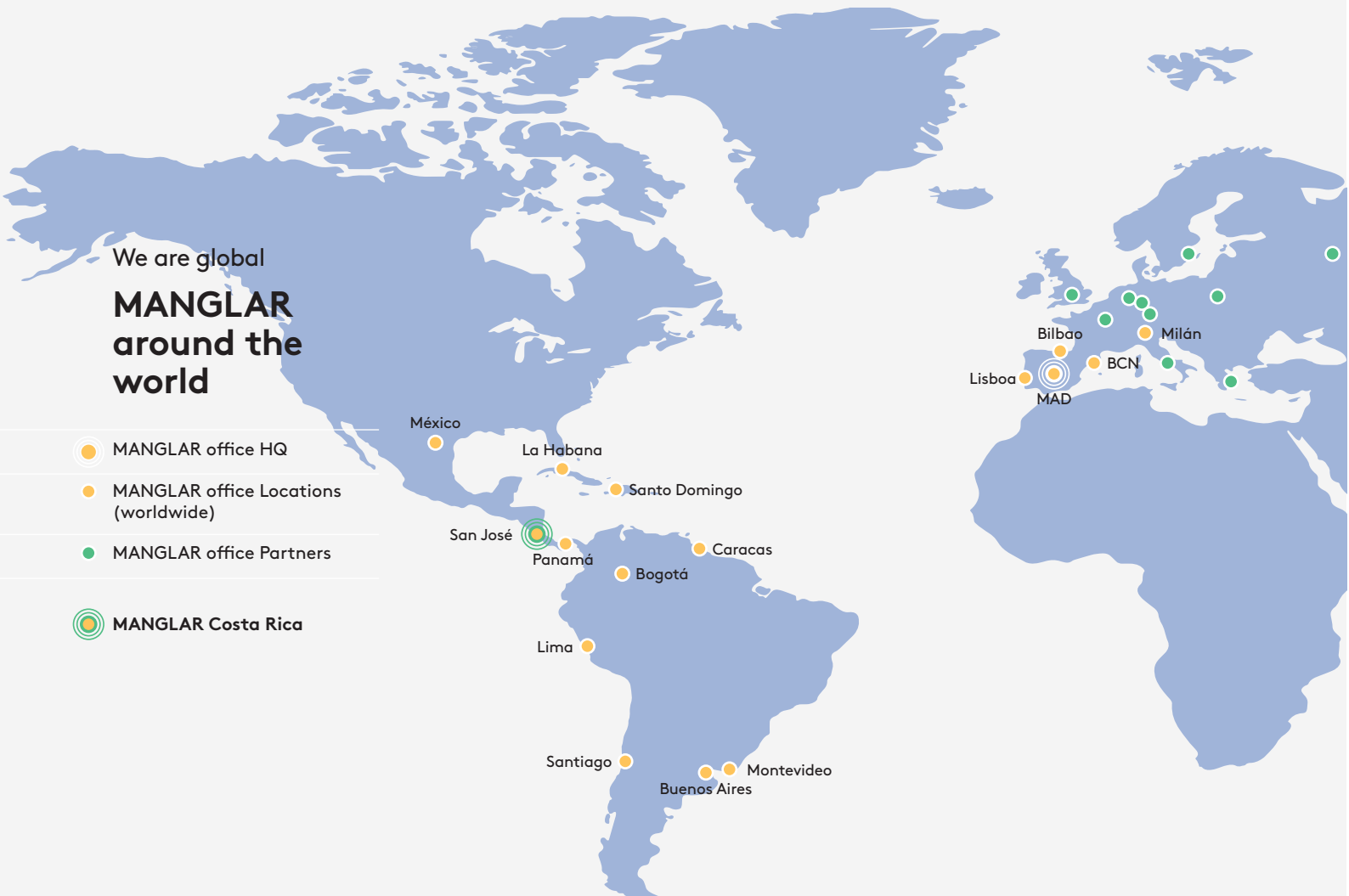
Vision

Build long term relationships with customers. Provide interdisciplinary and innovative solutions for their daily basis and future projects.



We are global
MANGLAR
around the
world

-  MANGLAR office HQ
-  MANGLAR office Locations (worldwide)
-  MANGLAR office Partners
-  MANGLAR Costa Rica



WHERE WE GIVE REGIONAL SUPPORT IN LATAM

Argentina	Buenos Aires	MANGLAR Office Argentina
Brazil	Sao Paulo	Perkins + Will
Chile	Santiago de Chile	MANGLAR Office Chile
Colombia	Bogotá / Medellín	MANGLAR Office Colombia
Costa Rica	San José	MANGLAR Costa Rica
Centroamérica	Supported out of Costa Rica	MANGLAR Office Costa Rica
Panamá	Ciudad de Panamá	MANGLAR Office Panamá - Apame Panamá
Perú	Lima	MANGLAR Office Perú
República Dominicana	Santo Domingo + Caribe	MANGLAR Office RD
México	Quintana Roo	Apame MX

POINT OF CONTACT

Our firm	MANGLAR DESIGN COLLECTIVE
Address	San José, Santa Ana. Centro SATC, edificio A, nivel 2
Webside	www.manglardc.com
Phones	+ 506 8322-2221
Person of contact	José Eduardo Arce

CLIENTS REFERENCES

Project	Contact	Telephone	Email
Microvention	Ing. Felipe González Facilities Director	+506 8666-8144	ana.ramirez@wework.com
Bayer	Sebastián González Anglada Head of Facilities Management CA&C	+506 6059-3280 +506 4100-6340	sebastian.gonzalez@bayer.com
Coopervision	Miguel Porras Facilities Director	+506 8932 5834	mporras@coopervision.com
Dos Pinos	Oscar Emilio Marin Camacho Alejandro Jose Mora Madrigal Project Engineers	+506 8881 6323 +506 8340 4085	osmarin@dospinos.com amoram@dospinos.com
Cargill	David Rodríguez Project Manager	+506 8838 3465	davidtecmanate@gmail.com

ESTRUCTURA ORGANIZACIONAL



Ing. Jorge



Arq. Orlando



Ing. Orlando



Ing. Juan Pablo Duque



Ing. José Eduardo Arce

BOSQUE

Fabiano Vincenzi

MANGLAR Office

Specialities:

PLANNING AND DESIGN

Work place innovation an Strategic Consulting.

Change management and implementation.

Corporative an Commercial Interiors Design.

STRATEGIC CONSULTING

LEED certification for new Building /commercial interiors/existing building.

Consulting for EDGE certification processes.

Consulting for RESET certification processes.

Consulting for WELL Ccertification processes.

BIM CONSULTANT

Building modeling Documentation of BIM models Construction BIM manager.

AEG Engineering Consulting S.A.



Specialities:

MEP

General Plumbing (DW/DHW/DWV).

Compressed Air (ISO Class 0)

Medical/Process Gases

(Nitrogen, oxygen, breathing air, argon, etc)

Vacuum

Fire Protection Systems

Sprinkler per NFPA 13 and FM 2.2

Stand Pipe and Infrastructure

Deluge Systems

Pre-action systems

Clean agent system

HVAC

General office and commercial building (CAV/VAV)

Cleanrooms class 6-8

Process exhaust

Chilled beams

DX and VRV Systems

Chilled water primary only system,

Feasibilities studies

Ice storage devices

Liquid desiccant

Condensate water for RH control

Re-Use of waste heat for industrial process.

Other Services

CFD

Noise control

Apame & Grupo ABC



Specialities

PLANNING AND ELECTRIC DESIGN

Medium voltage electrical systems

Low voltage electrical systems for residential

Commercial and industrial Facilities.

Telecommunication systems

Lighting analysis

Grounding systems and protection against atmospheric discharges

Emergency and backup systems

Survey of electrical systems

Professional on-site inspection.

Short circuit and Time Current Curve (TCC) Analysis

Arc Flash simulation.

CONSULTING IN ENERGY SAVING AREA

Energy Saving

Real time Energy management systems

Armonic and in rush analysis iIOT
Industrial Internet of things

Estruconsult S.A.

Structural Services

We are pioneers in the design and construction of SPSW (Steel Plate Shear Wall Structures) systems

Specialists in the analysis, design and detailing of steel, which implies an integral optimization of the earthquake-resistant metal systems.

We seek to optimize the structure density for all structures, seeking the complete detailing of all connections by creating 3D models for complete visualization,

We guarantee the lowest price of structures with metal prefabricated structures and/or locally assembled options.

We are pioneers in the design and construction of SPSW (Steel Plate Shear Wall Structures) systems in the country and export designs of metal structures for the entire Central American region. All our professionals participate

Customized design for floor slabs for high traffic. Design of rigid and flexible pavements, with conventional or fiber reinforcement.

Studies of soil structure interaction for the analysis and design of works on soft soils using specialized software.

We perform complex soil models to reduce the foundations of structures in limited terrain support capacities.

We use specialized software to optimize earth movements and base and sub-base thickness reductions with the use of geo-synthetic materials.

Experience in the design of hydraulic civil works. Our company has worked in the design and inspection of hydroelectric projects in everything related to hydraulic civil works ranging from dams, reservoirs, sand removal works, pipelines, etc. We have hydraulic engineers and hydrologists with vast experience in the analysis and design of hydraulic systems of rain and sewage.



BOSQUE

Bosque is a Costa Rica - based brand design studio.

We believe that great brands start from within, and live in the hearts and minds of the people that come in touch with them.

The integration of a strategic approach with thoughtful, distinctive and opinionated visual languages allow the creation of memorable and recognizable identities that live far beyond bi-dimensional brand experiences.

Brand Strategic Positioning & Development.

Naming.

Visual Identity Systems.

Print & Digital Collateral Materials.

Packaging Design.

Environmental & Experiential Design.

Signage & Wayfinding.

Clients of Environmental Graphics/ Signage/Wayfinding

Sep 2017 - Oct 2020

Bayer/NTT Data/Ciudad del Este / Mckinsey & Co./Gran Hotel Costa Rica/Uber/Akamai/Dint/Caricaco/Align Technology/Sagicor /Coopedota/Encore/Blue Sat/Texas Tech University/Stryker/Sfera Legal /Portafolio Inmobiliario/Nueve 84 /AR Holdings/Cumpanis/Simple Clean Eatery/GIZ/Intaco/Roche /Amazon/Escazú Village Fase 2 /Delegación de la Unión Europea /Lincoln Plaza/The Hive/Leumi Business Center/Atmos Campus de Negocios/Vmware/Establishment Labs/Teradyne/ALCCI/Bacard/BNP Paribas/Code Development Group/ Sencha Tea Bar/Pfizer/Viatris

BOSQUE



02

RELEVANT PROJECTS

Bayer
Project:
Service Center Costa Rica
Location:
AFZ Free Trade Zone, Barreal,
Heredia
Services:
Focus group
Schematic Design
Design Development
Construction Documents
Construction Permitting
Bidding process
Construction process

Size:
5000 m2
Budget:
\$6 000 000
Schedule:
4 phases, time per phase:
Design process 10-12 weeks
Construction process 12 weeks

2018-2019

Bayer, Heredia, Costa Rica.



We Work Costa Rica

Project:

Corporate Offices

Location:

Heredia, Costa Rica

Services:

Due diligence

Design Development (in
coordination with WW
México)

Construction Documents

Construction Permitting

Bidding process

Construction process

Size:

11 350 m2.

Budget:

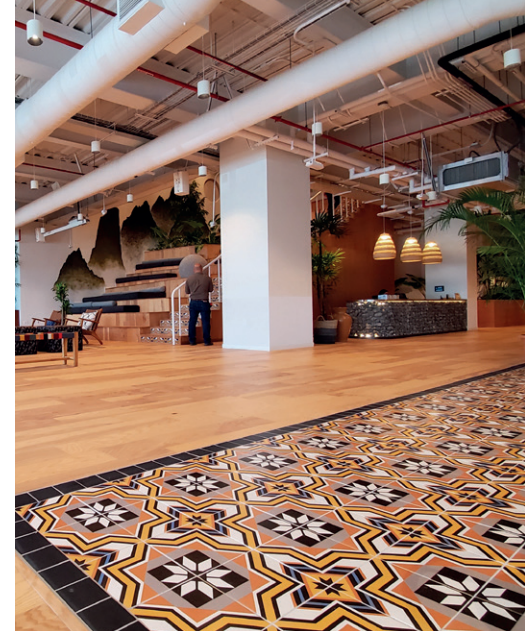
\$9 000 000

Schedule:

First phase 12 weeks

Construction process 120 days

2019-2020



Cargill
Project:
Electric System Redesign
Location:
San Rafael, Alajuela
Services:

Medium voltage electrical design including 4.25 MVA electrical substation.
Low voltage electrical design.
Lighting automation design
Equipment procurement support.
Equipment Commissioning
Manufacturing MCC and

power systems.
Legal permits process
Size:
10 000 m²
Budget:
\$3 000 000
Schedule:
Design process 16 weeks
Construction process 26 months

2019-2020



Cargill, Alajuela, Costa Rica.

CEDI Dos Pinos, Alajuela, Costa Rica.



CEDI Dos Pinos, Alajuela, Costa Rica.



CEDI DOS PINOS
Project:
Distribution Center
Location:
Coyol, Alajuela
Services:
Schematic Design
Design Development



Cargill, Alajuela, Costa Rica.

Construction Documents and permits
Construction Process
Size:
52 000 m²
Budget:
Phase 1 \$4.2 million, Phase 2 \$1.3million, Phase 3 \$1.0 million
Schedule:
3 phases, developed in 3 years

Coopervision

Project:

New Contact Lens Facilities

Location:

Heredia, Costa Rica

Services:

Construction commissioning
Consultancy.

Size:

20,000 m2.

Budget:

\$22 000 000

Schedule:

First phase 15 weeks

Construction process 120 days

2019-2020



Microvention

Project:

New Coyal Facilities

Location:

San Rafael, Alajuela

Services:

Architectural, Structural and electromechanical design for new production facilities at Zona Franca Coyal.

Equipment procurement support.

Equipment Commissioning

Manufacturing MCC and power systems.

Legal permits process

Size:

20 000 m2

Budget:

\$30 000 000

Schedule:

Design process 16 weeks

Construction process 26 months

2019-2020

Cargill, Alajuela, Costa Rica.



Admedes

Project:

Production and Warehouse

Location:

Zona Franca Coyol, Costa Rica

Size:

1800 m2

Services:

Arch, MEP, HVAC, Design and commissioning

Size:

1800 m2

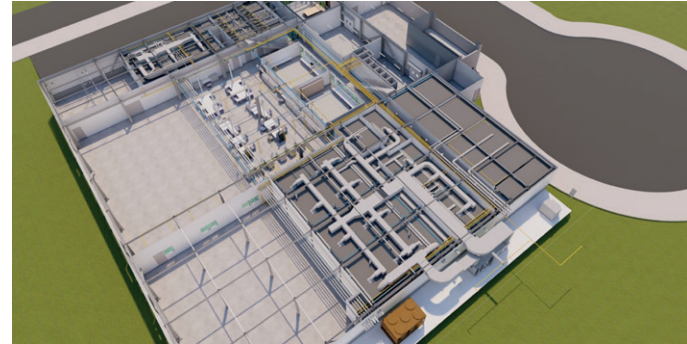
Budget:

\$5 million

Schedule:

Pre- construction, Biding process

2022



List of projects carried out in the last 4 years that prove our experience in complex projects, of different disciplines and needs.

LIST OF RELEVANT EXPERIENCES				
Project	Description	Size	Year	Owner
Coopervision	Mechanical, Fire Protection and VAC designs /Energy consumption and Load Management at New Contact Lens Facility	20000m2	2013-2014	Coopervision
Abbot Cardio Vascular	Economical/Technical Feasibility study to install Ice Storage Device (ISD)+Economical and Technical Feasibility study to install Condenser Heat Recovery to offset Electric RH Control	15000m2	2013-2014	Abbot Cardio Vascular
Phillips Nicoya	Architectural, Structural and electromechanical design for clean room upgrade.	2000m2	2020-2021	Phillips
Microvention	Architectural, Structural and electromechanical design for new production facilities at Zona Franca Coyol.	20000m2	2020-2021	Microvention
Distribution Center (CEDI) Walmart, Coyol de Alajuela.	The structure of the project is made up of the steel frame type system and prefabricated concrete enclosures.	52000m2	2012	Walmart
Business Building Cargill	Building offices, and offices from productive areas.	3500m2	2015-2016	Cargill
Santa Ana Town Center	Comercial and Gastronomic Plaza, with offices Building.	24000m2	2017-2018	Urban Edge
Cedi Cargill	Building offices, cafeteria, clinic, laboratories and productive areas.	16000m2	2017	Cargill
Selinas Hostels-cowork	Diferents location of Selinas's Hostels in Cancún, Mexico.	6000m2	2018	Selina
CITI Services Center	Building D, level 4 of Cafetal Business center, Belén, Heredia.	1800m2	2018	Citi
Corporacion PIPASA	Preliminary study and preliminary project of the factory, La Garita, Alajuela.	30000m2	2015-2018	Cargill
Bayer Costa Rica	Building C14 of AFZ free zone, Heredia.	5600m2	2017-2018-2019	Bayer
We Work Costa Rica	Building C3 of Business and Comercial center [real Cariari", Heredia.	11324m2	2019	We Work
Selinas Hostels-cowork	Diferent locations: Tamarindo, la Fortuna, Puerto Viejo, Nosara, Jaco and San José, Costa Rica.	9000m2	2017-2019	Selina
Regus, Corporate Center	Offices restacking, level 6	1800m2	2019	Regus
ICU Medical	ICU Medical Zona Franca	3600m2	2019	ICU

abbvie

MicroVenton[®]
TERUMO

Nestlé

PHILIPS

Selina

JLL
Jones Lang LaSalle

Dos Pinos

citi

Abbott

AstraZeneca

Edwards

icumedical

Regus

EXTRALUM
VIDRIO Y ALUMINIO

wework

COYOL
FREE ZONE

Walmart

Microsoft

PROQUINAL

Cargill

OUR CLIENTS IN COSTA RICA

CooperVision

BAYER

ST. JUDE MEDICAL
MORE CONTROL. LESS RISK.

Boston
Scientific

Coca-Cola

Lionbridge

3M	British Telecom	Gobierno de España	Loewe	Riofisa
ABB	Bureau Veritas	Eulen	L'Oréal	Roche
AC Hotels	Caixa Bank	FCC	Miele	Roland Berger
Accenture	Caixa Geral de Depósitos	Fox	Mckinsey	Sanitas
Acciona	Caterpillar	GALP	McGraw Hill	Sanofi
ACP Portugal	Cesce	Gas natural	Merck Sharp Dohme	SAP
Adelas SegurCaixa	Citroën	General electric	Microsoft	Sara Lee
AIG	CityBank	Generalitat de Catalunya	Mondelez	Seagram
Alcampo	Clear Channel	Global Crossing	Multiópticas	Securitas
Alcatel	Coca-Cola	Global Switch	Motorola	Sephora
Allfunds	Codere	Hewlett Packard	MSC Software	Solvay Pharma
Altran	Cofidis	Hispania	Nesspreso	Sonae
AT Kearney	Colt	H&M	NH Hoteles	Standard & Poor's
Atento	Comunidad de Madrid	Ibercaja	Nokia	Talenta
Ayuntamiento de Madrid	Coriό	Iberia	Nueva Pescanova	TAP
Banca March	Costco	ING Bank	OHL	Telefónica
BBVA	Cruz Roja	Nationale nederlanden	Oliver Wyman	Tetra Pak
Banco de Portugal	Cuatrecasas	ING Real estate	Ono	Tod's
Banco Espirito Santo	Danfoss	Indra	Oracle	Uned
Banco Santander	Deka Immobilien	Intrum Justitia	Orange	Unidad Editorial
Bancopopular-e	Dentix	Islalink	Pfizer	Unilever
Bankia	Deutsche Bank	Jazztel	Portugal Telecom	Unisono
Banque Privée Edmond de Rothschild	DHL	JB Capital Markets	Procter & Gamble	Universidad de San diego
Barclays Bank	eBay	Johnson Controls	PSA Finance	Valentino
BnP Paribas	EDP Renováveis	JP Morgan	Redexis Gas	Victoria Seguros
Belcorp	El Economista	Kellogg's	Regus	VidaCaixa
Boston Consulting Group	Endesa	KPMG	Refer Telecom	Vueling
Bristol Myers Squibb	Enersis	Latham & Watkins	Renfe	Vocento
British Petroleum	Everis	Lilly	Repsol	Vodafone

GLOBAL CLIENTS

OUR GLOBAL CLIENTS



03

PROJECT TEAM



Architecture



Orlando Brealey
Architect (BIM)
BIM Project Manager

+20 YEARS OF EXPERIENCE

Structural



Orlando Gei
Structural Engineer

+25 YEARS OF EXPERIENCE

MEP/HVAC Coordinator



Jorge Lossley
Mechanical Engineer
(BIM) HVAC

+24 YEARS OF EXPERIENCE



Edelvaiz Navarro
Architect (BIM)
BIM Cordinador
Lighting Design



Marcelo Marrero
Architect (BIM)
BIM Manager



Ariel Quesada
Architect (BIM)
BIM Modelador



Gustavo Porras
Structural Engineer



Daniel Mata
Structural Engineer



Juan Navarro
Structural Drawing
BIM Modelador

MEP Leader



Juan Pablo Duque
MEP Engineer (BIM)
Power Systems and
telecommunications



Hector Solano
Electrical Engineer (BIM)
Power Systems



Victor Quiras
MEPFP Drawing (BIM)
HVAC



Nayla Carvajal
MEPFP Drawing (BIM)

Electrical Leader



Jose Eduardo Arce
MEP Engineer (BIM)
Power Systems



Keilyn Cubero
Electrical Engineer (BIM)
Power Systems



Isaac Moreno
Junior MEP Engineer (BIM)
Lighting Design



Sofia Jiménez
Junior MEP Engineer (BIM)
Specialized electrical
studies

HVAC/FPS Leader



Jorge Lossley
Mechanical Engineer
(BIM) HVAC



Johan Mora
Junior MEP Engineer (BIM)
Hydrosanitary Systems



Greivin Tosso
MEPFP Drawing (BIM)
Fire detection and
supresion Systems



Julio Castillo
MEPFP Drawing (BIM)
Fire detection and
supresion Systems



Wenceslao Quituk
MEPFP Drawing (BIM)
Fire detection and
supresion Systems

BIM Coordination



Aaron Piedra
BIM Coordinator
BIM Project Manager

+15 YEARS OF EXPERIENCE

Leed



Maria Matamoros
LEED AP, BD+C, EDGE
Auditor, EDGE Expert, and
RESET Consultant

+10 YEARS OF EXPERIENCE

Relevant Experience

Empresa	Constructora / Cliente	Contacto	Teléfono	Correo	Proyecto	Niveles	Área (m2)
Estruconsult	Volio y Trejos	Ing. Gerardo Volio	+506 2246-0339	gerardo_volio@volioytrejos.com	Diseño estructural Cedi Walmart Coyol	2	52.000 m2
Estruconsult	Volio y Trejos	Ing. Gerardo Volio	+506 2246-0339	gerardo_volio@volioytrejos.com	Diseño estructural Mercado Cenada PIMA Chorotega	1	22.000 m2
Estruconsult	Volio y Trejos	Ing. Gerardo Volio	+506 2246-0339	gerardo_volio@volioytrejos.com	Diseño estructural Walmart Alajuela	2	43.500 m2
Estruconsult	Edificar	Ing. Román Salazar	+506 8863-3968	rsalazar@edificaronline.com	Diseño estructural Hotel y Casino Sheraton	8	12.000 m2
Estruconsult	Edificar	Ing. Román Salazar	+506 8863-3968	rsalazar@edificaronline.com	Diseño estructural Edificio Vista las Palmas	15	18.900 m2
Estruconsult	EVCO (Eliseo Vargas)	Ing. Federico Salazar	+506 2010-1000	fsalazar@evco.cr	Diseño estructural Mr. Bodeguitas Curridabat	7	7.000 m2
Estruconsult	Proycon	Ing. Luis Retena	+506 2543-1600	lretana@proycon.com	Diseño estructural Remodelaciones Oficinas Citi, Oficentro Cafetal	-	-
3G Office	EVCO (Eliseo Vargas)	Ing. Gustavo Castro	+506 8868-0685		Diseño centro comercial Santa Ana Town Center	4	25.000 m2
3G Office	Proycon	Ing. Humberto Navarro	+506 8825-7299	hnavarro@proycon.com	Oficina en Cafetal Citi	5	6.500 m2
3G Office	Proycon	Ing. Max Fischel	+506 8341 6603	mfischel@proycon.com	Oficinas en Cafetal Nestlé	1	1.500 m2
3G Office	Vanderlatt y Jiménez	Ing. Federico Acon	+506 8388-1920	Facon@vicr.net	Edificio Sigma, compuesto por 2 edificio comerciales mixtos y un edificio de 7 niveles de parqueo	7	55.000 m2
3G Office	Constructora Scala	Ing. Orlando Sibaja	+506 8918-8085	osibaja@scala.co.cr	Laboratorio de innovación Banco Promerica	1	450 m2
3G Office	Constructora AFZ	Ing. Andrés Madrigal	+506 8703-8083	amadrigal@americafreezone.com	Oficinas Citrix American Free Zone	1	1.800 m2
3G Office	Constructora AFZ	Ing. Gustavo Barrantes	+506 8703-9746	gbarrantes@americafreezone.com	Oficinas Bayer etapa 1 a la 5	3	6.000m2
Grupo ABC	JyJ Electromecánica	Ing. Steven Jiménez	+506 8887-0158	sjimenez@jvielectromecanica.com	Diseño eléctrico planta de producción de piña, Volcán Empacadora Sonador. Corporación del Monte	1	4.900 m2
Consorcio 3GEA	JyJ Electromecánica	Ing. Danny Jiménez	+506 8834-8209	djimenez@jvielectromecanica.com	Diseño arquitectónico, estructural electromecánico del las mejoras internas del edificio C3, acondicionado para las oficinas de Wework Costa Rica	6	11.200 m2
	Bilco	Arq. Pedro Labarca	+506 7014-0672	pedro.labarca@bilcocr.com			
Grupo ABC	OPB Arquitectos	Marco Castro	+506 8338-3000	mcastro@opbarquitectos.com	Diagnostico de los sistemas electromecánicos, previo a la remodelación del Hotel Costa Rica	5	3.000 m2
Grupo ABC	Fusión Inmobiliaria	Ing. José Murillo	+506 8792-6767	jmurillo@parqueactiva.com	Diseño en Media y Baja tensión de Planta de Producción Extralum Grecia.	1	30.000 m2 / 3.5 MVA
Grupo ABC	Cargill Nutrition	Ing. David Serrano	+506 6010-2317	-----	Diseño y Construcción remodelación eléctrica planta extrusora de alimento animal.	4	3.000 m2 / 3 MVA
Grupo ABC	Cargill Meats Costa Rica	Ing. Ricardo Paniagua	+506 7300-0686	Ricardo_Paniagua_Marin@cargill.com	Diseño y Construcción eléctrico remodelación eléctrica Planta procesadora de pollo San Rafael incluyendo la planta de tratamiento de aguas residuales	2	10.000 m2 / 4.5 MVA
Grupo ABC	Cargill Meats Costa Rica	Ing. Bernal Rodríguez	+506 6057 3856	Bernal_Rodriguez_Quiros@cargill.com	Diseño y Construcción eléctrica remodelación de los sistemas de potencia de Planta Productora de embutidos Tiquicia, Planta productora de embutidos Kimby y Planta productora de embutidos Cinta Azul	2	

Relevant Experience

Grupo ABC	Cargill Meats Costa Rica	Ing. Christian Corrales	+506 8856-9328	Christian_Corrales_Ruiz@cargill.com	Diseño y Construcción eléctrico nueva línea de producción extrusora Andritz, alimento animal, Planta Cobesa. Diseño y Homologación de Sistema de Control Eléctrico junto a Empresa Andritz, Holanda.	6	1.5 MVA
Grupo ABC	PIMA	Ing. David Ovares	+506 8701-2869		Rediseño y Construcción Ampliación de Programa Integral de Mercadeo Agropecuario		2.500 m2 / 500 kVA
Grupo ABC	Vicesa Costa Rica	Ing. Hugo Faba	+506 8705-0268	hfab@grupovical.com	Diseño y Construcción de Ampliación de Planta y Sistema de Purificación de Gases de Hornos	1	650m2 / 750 kVA
Grupo ABC	Vega Voltios	Ing. José Vega	+506 8722 5636	jose.vega@vegavoltios.com	Diseño de la remodelación eléctrica para el respaldo de Hornos (proceso critico) de producción, planta Coopervision	-	500 kVA
AEG, Grupo ABC, Aaron Piedra	Cargill Corporativo	Ing. Fabio Duque		Fabio_Duque@cargill.com	Ingeniería de Detalle MP. Consultoría para el Diseño Arquitectónico, Civil, Estructural, Mecánico, Eléctrico y de Refrigeración para Proyecto del CEDI Cargill y Edificio Administrativo.	-	30.000 m2 / 5 MVA
Consortio 3GEA	Coopervision	Ing. Miguel Porras	+506 8932 5834	MPorrasAlfaro@coopervision.com	Project Manager, Auditoria de diseño, construcción y puesta en marcha eléctrica y telecomunicaciones de edificio CR2	2	10.000 m2 / 2.5 MVA
Grupo ABC	Schneider Electric Costa Rica	Ing. Carlos Herrera	+506 8707 3873	carlos.r.herrera@schneider-electric.com	Especificación de equipos y pruebas FAT para clientes corporativos de Schneider Electric / Grupo ABC. Estudios especializados para puesta en marcha de subestaciones eléctricas en media tensión de clientes industriales. Proyectos Varios	-	-
Grupo ABC	Ingenio Santa Rosa (Panamá)	Ing. César Córdoba	+507 6401-1190	ccordoba@azunal.com	Diseño en MT y BT para Ampliación de Planta. Reubicación y operación de Generadores para interconexión con la red panameña de transmisión.	1	6.000 m2 / 10 MVA
Grupo ABC	BIMBO de Costa Rica	Ing. Luis Araujo	+506 7298-2110	laraugal@grupobimbo.com	Diseño remodelación eléctrica sistema de potencia subestación planta de producción de panes, Bimbo Costa Rica	1	3.000 m2 / 1.5 MVA
Aaron Piedra	DWL	Ing. Uri Lipszyc	+506 4101-8650	uri@dwlcr.com	Dirección BIM Planta Concentrados Coca-Cola	-	45.000 m2
Aaron Piedra	Piasa-Garnier	Arq. Mario Rivera	+506 2205-3660	marivera@garnierarquitectos.com	Asesoría BIM Estrategia BIM Walmart Centroamérica	-	5.000 m2
Aaron Piedra	Garnier /Garnier	Ing. Ernesto Jimenez	+506 2205-3623	ejimenez@garnier.cr	Dirección BIM Oficentro Sabana	-	18.500 m2
Aaron Piedra	Constructora Estructuras	Ing. Fabian Matamoros	+506 2279-0232	fmatamoros@estructurassa.com	Modelado BIM Auditorio ANDE	-	5.000 m2
Aaron Piedra	Zona Franca La Lima	Ing. Tanya Harwood	+506 8701-8558	tharwood@garnier.cr	Dirección BIM Coloplast	-	30.000 m2
Aaron Piedra	AEISA	Ing. Juan Sebastian Marín	+506 2582-1452	jmarin@aeisa.net	Dirección BIM Nota Escalante	-	10.000 m2
Aaron Piedra	GPO España	Arq. Roger Beaumont Sai	(+34) 932 470 069	rbeaumont@gpogroup.com	Modelado BIM GPO	-	10.000 m2
Aaron Piedra	Arquitecto Daniel Lacayo	Arq. Jose Francisco Chav	+506 2204-7707	jchavarria@lacayoarquitectos.com	Dirección BIM ODM , banco central	-	23.500 m2
Aaron Piedra	Arquitecto Alberto Reifer	Arq. Gustavo Ocampo	+506 2288-5000	gocampo@reiferarquitectos.com	Dirección BIM Banco Popular	-	23.000 m2
Aaron Piedra	Modus Operandi MO	Arq. Fabian Villamichel	+506 8841-1894	fvillamichel@moconsultores.com	Dirección BIM Vive Tibas	-	15.000 m2
Aaron Piedra	Arq. Javier Salinas	Arq.Lou Vanzky Guthrie	+506 8860-6513	jguthrie@isarquitectos.com	Dirección BIM Asamblea Legislativa	-	60.000 m2

CURRÍCULUMS

Orlando Brealey

Architecture Leader



Bio

Orlando joined the MANGLAR office in February 2017 as Director and Partner of the Country Office.

Where he has managed to form and lead a multigenerational group with extensive experience in big scope and complexity.

Proven experience in design and construction in office, building developments, banks, shopping centers, core and shell and interiors. From the planning phase, design, processing and inspection, construction management in Costa Rica and the United States.

Specialized in the use of digital technology for the design, development and construction of projects through the implementation of BIM Technologies (Building Information Modeling) during all the construction cycles of the Project.

Great leadership ability and coordination of multidisciplinary teams in projects of all sizes, performing as Project Manager, Technical Director, Project Architect, Technical Director, Project Architect or constructor.

Relevant Experience

Coopervision, ZFC, 2019-2020

Design review and commissioning of the new production plan addition.

ICU Medical, 2019

Design of the Hand wash area.

SIGMA Corporate Center, 2016

Business center, San Pedro Costa Rica. Orlando worked in Design, as Project Architect and during construction of the building as Project Director. Size: 55,000 m2.

SANTA ANA TOWN CENTER, CR, 2017-2018

Building design for commercial use (office and retail). Orlando worked in the design of the core and shell as well as the gastronomic plaza that is his main attraction, he was the architect who designed the project and during the construction of the building he worked as the Project Director. Size: 24,000 m2.

WE WORK, CR in process, 2019

Building design for commercial use (office).

Orlando worked as the AOR of the project, he has the responsibility of advising the foreign investors and

technical team that accompanies them, with the legal guidelines of the country. Also, when the construction process is active, Orlando will lead the construction supervision. Size: 11,000 m2.

CITI Services International Center, 2016



Business Center Cafetal, Costa Rica, Building D. Orlando worked as the Architect project with our colleague Marcelo . They had to study and comply with the international guidelines of CITI.

Citi is one of our continuous clients, which relies on our capacities and qualities of service, that is why from that project, 3g is its consulting architect, whose team leader is Orlando. Size: 1800M2.

Bayer Services International Center, 2017-2018



AFZ free zone, Costa Rica, Building C14. Orlando worked as the Architect project.

Bayer is one of our continuous clients, which relies on our capacities and qualities of service, that is why from that project, 3g is its consulting architect, whose team leader is Orlando.

We all ready did phase 1,2 and 3. At this moment we have in process the phase 4. Size: 5600M2

Orlando Gei

Structural Engineer



Bio

Orlando, Engineer, studied at the University of Costa Rica, specializing in a Master's Degree in Structural Engineering since 1994.

Member in Professional Associations:

CFIA, Federated College of Engineers and Architects of Costa Rica

CIC, College of Civil Engineers of Costa Rica

ACIE, Costa Rican Association of Structural Engineers

ACI-CR, Costa Rican Association American Concrete Institute

IABSE, International Association for Bridges and Structural Engineering, Switzerland

ASCE, American Institute for Civil Engineers, US SEI, Institute of Structural Engineering, USA

Since 1999 he founded together with a partner Estruconsult SA. Today as CEO he directs in a very personalized way each project that comes to his hands. Careful of the details and good customer services, achieving lasting relationships with their customers.

Relevant Experience

Chorotega Regional Market, Guanacaste.

The project is an agri-food center, where its area of influence is made up of 11 cantons of Guanacaste and 1 canton of Alajuela.

As well as Nicoya communities. We worked on the structural and architectural design of the project. Work supervision was also carried out

Size: 22400 M2

Year: 2018-2019

Distribution Center (CEDI) Walmart, Coyal de Alajuela.

The structure of the project is made up of the steel frame type system and prefabricated concrete enclosures.

Orlando led the consulting group in structural design and supervision.

Size: 52 700 m2 Year: 2012

Industrial plant of Confecciones Burkar, for Ropa Internacional, Poás de Alajuela.

Services of analysis of design, supervision of work and

management of the project in its entirety were offered.

Size: 1500 m2, Year: 1997

Orlando, along with its consulting company, has participated in large projects at an international level, covering the Central American Region and even Mexico.

They have been made : seismic vulnerability studies, reinforcements, remodeling and the structural designs of complex works.

México: Casinos Coatzacoaltas (Veracruz) and Casino Crown City Beautiful Villa (Tabasco)

Belize: Estacion and Balneario Itzana (Placencia) Nicaragua: Hotel Hyatt (Managua) and Infrastructure of Guacalito (Rivas)

Panama: Bilingual Maria Auxiliadora School (Amajan) and Bodegas el Darién Verde (Darién)

Guatemala: Allied Contact Center Building (Las Charcas) and Escuintlá Agency Warehouse (Escuintlá)

El Salvador: assessment and vulnerability study of Walmart (San Salvador)

Jorge Lossley

Mechanical Engineer Leader



Bio

Mechanical Engineer from the University of Costa Rica with a Master's Degree in Renewable Energy Systems Management obtained from the University of Flensburg, Germany.

Visiting Professor on the part of international academic DAAD program. Beneficiary of the DAAD scholarship program for professionals and under which the MSc degree was obtained.

25+ years of professional experience in planning, design, inspection and project management in air conditioning systems, fire protection systems, plumbing, conservation and energy management.

Jorge has developed projects in Free Zones in Costa Rica and counts among its client portfolio the main medical industry companies installed in the country, being a service provider in infrastructure, construction, remodeling, improvement continuous, management and energy management. It has been characterized by offering innovative proposals to customers, being pioneers in establishing energy storage systems for air conditioning (Ice banks) in the Coyol Free Trade Zone, as well as the use of rejection heat from cooling systems for humidity control in clean rooms

Relevant Experience

Coopervision, ZFC, 2019-2020 Design review and commissioning of the new production plan addition, currently working on a 600 people per shift Cafeteria.

We Work, 2019-2020 HVAC Design and inspection.

Coopervision, ZFC, 2013 - 2014 Mechanical, Fire Protection and VAC designs / Energy consumption and Load Management at New Contact Lens Facility, 2700 cooling tons, district cooling and RH control by condenser heat rejection, saving 1.6 MW power demand.

Abbott CardioVascular, ZFC, 2013-2014 Economical and Technical Feasibility study to install Ice Storage Device (ISD) which will offset peak demand by 600 kW with a payback less than 3 years. Economical and Technical Feasibility study to install Condenser Heat Recovery to offset Electric RH Control, saving 0.6 MW power demand with back less than 9 months

Boston Scientific Propark, 2011 Economical and Technical Feasibility study to install Ice Storage Device (ISD) which will offset peak demand by 600 kW with a payback less than 3 years

Boston Scientific Global Park, 2011 Economical and Technical Feasibility study to install ISD which will offset peak demand by 200 kW with a payback less than 3 years.

INCA Banacol Sardinal, 2010 Mechanical and VAC designs for 5500 m2 Pineapple processing plant

Hospira Holding CR4 office building, 2010 Mechanical, FPS and VAV DX type AC System design for a 7.500 m2, 3 stories building.

Pricesmart Corporation, 2010 Mechanical, Fire Protection and VAC designs / Energy consumption and Load Management at Latin America facilities. (Guatemala, Honduras, Nicaragua, Salvador, Costa Rica, Panama, Colombia, Dominican Republic and other Caribbean island)

Novapark, 2009 Mechanical, Fire Protection and VAC designs for a 20.000 m2 Distribution Center and a 35.000 m2 Plastic Molding Manufacturing plant.

Oficentro El Cedral, 2009 Mechanical, Fire Protection and VAC designs for a 38.000 m2 office building park.

Multip plaza Mall V stage, 2009 Mechanical, Fire Protection and VAC designs for a 74.000 m2 shopping mall.

Avenida Escazu AE2 Combined use building, 2009

Mechanical, Fire Protection and VAC designs for a 25.000 m2 building.

Juan Pablo Duque

Electromechanical Engineer Leader



Bio

Electromechanical engineer, graduated from "Instituto Tecnológico de Costa Rica" and "Colegio Federado de Ingenieros y Arquitectos" (CFIA) active member since 2010, Juan Pablo is currently Grupo ABC Technical and Design leader.

Through his professional career, he's been involved in multiple high complexity residential, commercial and industrial projects. Always proposing innovative and cost-time effective solutions.

With a complete commitment with energy efficient processes and carbon print reduction, Juan Pablo has promoted and developed multiple programs for our business, his team and clients.

Completely identified with an structured way of work, is the Procore's promoter and implementation leader for the consortium.

His experience and leadership has been developing and maturing for the last 10 years in the organization and its complemented with his involvement in most consulting design projects.

Relevant Experience

Coopervision, ZFC, 2019-2020 Design review and commissioning of the new production plan addition.

Wework, Costa Rica, 2019

Leader of electromechanical design for the development of a high density project and Wework's first building in Costa Rica.

Size: 11.000 m2

Ingenio Santa Rosa, Panamá, 2018

Leader of redesign of the power distribution system of the sugar production plant. Independent steam generation system with an installed capacity of 8.5 MVA

Size: 8.5 MVA

Cargill, Costa Rica, 2017

Leader of electromechanical design of Cargill Distribution Center (CEDI) and support buildings as administrative and productive offices, clinic, dining room, Quality Laboratories. 13,000 m2 production plant, 3,000 m2 support buildings. Power 4 MVA

Size: 16.000 m2, 4 MVA

Cargill Administrative building and production offices, 2015-2016

Electromechanical design of the administrative master plan of the San Rafael production complex. Including all MEPFP disciplines

Size: 3500m2

Jose Eduardo Arce

Electromechanical Engineer



Bio

Grupo ABC Co-founder, José Eduardo is the General Manager and Marketing Director of the Company. He has more than 10 years of experience in electrical design, construction and maintenance. He has extensive experience in administration, cost management and strategic management. For more than nine years he has also devoted himself to the teaching of electrical engineering and has given conferences at local and international conferences.

Dim knowledge, and Procore, Revit MEP, ETAP, PTW SKM, Dialux software use.

Colegio de Ingenieros Tecnólogos (CITEC): Professor for Profesional update program courses.

Colegio de Ingenieros Tecnólogos (CITEC): Electrical Board active member where security, code, courses and projects are discussed and developed.

Asociación Salvadoreña de Industriales (ASI): Professor of Energy Efficiency program, Module 7. "Energy Quality".

Relevant Experience

Corporación PIPASA- Planta Garita, Electrical Design.

Extrusiones de Aluminio S.A. "EXTRALUM"

Fire protection system design Planta Cartago.

Corporación PIPASA- Planta Garita. Preliminar Studies and design development.

Corporación PIPASA- Planta San Rafael. Design and Construction document nationalization Planta TicoFruit

Study of short-circuit and protections coordination.

Corporación PIPASA- Electrical design of 25 chicken growth facilities La Garita, Carbonal y Siquiaries, Alajuela. Electrical power systems Master Plan.

Planta Aguilar y Solís, Belen.

Electrical design Planta Belén, Alajuela.

Extrusiones de Aluminio S.A. "EXTRALUM"

MEPFP Electromechanical design of Extralum new process facility. 30.000 m2 Grecia, Alajuela

Corporación PIPASA- Planta San Rafael

Electric design and construction. Poultry Process facility, San Rafael. San Rafael, Alajuela.

Thermotec de Centroamérica S.A.

Electrical construction "Red de Frio"

Programa de Integración del Mercado Agropecuario, PIMA, Barreal de Heredia

Corporación PIPASA- Planta Extruder, La Garita Alajuela

Electric design and construction. Extruder Process. Facility Extruder. La Garita, Alajuela

Corporación PIPASA- Planta Cinta Azúl

Electric design and construction. Cinta Azul. El Tejar, Alajuela.

Productora La Florida S.A.

Electrical diagnosis and electrical maintenance service to three substations of Florida Bebidas, Cristal Plant with a total of 9 MVA: bank capacitors, transformers, medium voltage conductors, electrical tests on power circuit breakers, cleaning and condition verification.

Aaron Piedra

BIM Manager



Bio

Aaron is a specialist in modeling and BIM documentation of Revit Architecture, Revit Structure, Revit MEP 2016, as well as review and collaboration of BIM models of Naviswork Manage 2016.

He has the certificates of Professional Certification Revit Architecture 2012, and Revit Architecture 2009 Advance.

He has extensive experience in BIM modeling and will be responsible for coordinating everything related to this topic in the project.

Certified Revit professional with over 10 years of proven experience.

His specialty based on BIM modeling and documentation covers the technologies: revit structure, revit MEP 2020 and Naviswork management 20202.

He has also trained business teams (and / or collaborated on projects) with different architectural, engineering and construction firms.

Relevant Experience

Walmart Centraamérica. 2019. BIM Implementation at Piasa-Garnier.

Coloplast, 2019-2020. Zona Franca la Lima, 2019-2020, BIM Coordinator

We Work General Cañas, 2019. BIM Coordinator

EEISA, Nota Escalante, 2019. MEP-BIM Coordinator

Constructora Estructuras, 2019. BIM Coordinator in construction process

CEDI ,Carguill. 2018. BIM Coordinator

Multitenant 2 , Zfla Lima, 2018. BIM Coordinator

Planta de concentrados Coca-Cola,DWL, 2018-2020. BIM Coordinator in construction process

Banco Popular, Reifer, 2018. BIM Coordinator

ODM building, Lacayo 2017. BIM Coordinator

Terminal APM , ICICOR, 2016. BIM Coordinator

Asamblea Legislativa, Salinas, 2015. BIM Coordinator

Pellas Development Group, Nanku, 2015. BIM Coordinator

Zona Franca coyol, 2014-2020. BIM manager

Cámara Costarricense de Arquitectura e ingeniería, 2014. BIM and Revit 2014 instructor

Athrocare , ZFC, 2014. BIM manager

Revit Architecture 2013 Instructor

Bilco Constructora, 2013. BIM Modelling

Dalab Design, 2013. BIM Manager

Polini Martinez Arquitectos, 2013. BIM Manager. Revit and Navisworks 2013 coordinator.

Mo Consultores, Enero 2012- Actual. BIM Manager . revit and Navisworks 2013 coordinator.

Caja Costarricense del Seguro Social, 2012. BIM instructor

ARS Arquitectura e Ingeniería, 2012. BIM instructor

ACL Arquitectura e Ingeniería, 2012. BIM instructor

IECA Internacional, 2012. BIM-Structure instructor

Instructor en Revit Architecture y Structure 2012.

EDICA Empresa constructora, 2012. BIM instructor

Circuito, 2012. BIM-MEP instructor

Hector Solano

Electromechanic Engineer



Bio

Electromechanic Engineer graduated from Universidad Tecnológico de Costa Rica. He has more than 14 years of experience in design and inspection. For more than nine years he has also devoted himself to the teaching of electrical engineering and has given conferences at local and international conferences.

Hector has advanced knowledge and experience in mechanic and electric systems due to a continuous learning passion, creating a specialist in different fields: power supply systems, network technologies, fire detection, automatization systems control; and in mechanical systems as fire suppression system, general plumbing, medical gases, etc. Every project that eng. Hector involves developing over a high technical level with an additional commitment and responsibility vision.

Relevant Experience

Administradora fiduciaria ZMZ

Design and inspection of fire detection and suppression system all over the existing industrial plant. Size 8100m²

Lonza costa rica s.A

Fire detection and suppression system all over the new Costa Rica Lonza Offices . Size 2550m².

Extrusiones de aluminio s.A

Fire detection and suppression system all over Costa Rica glass plant expansion . Size 2700m².

Junta de educación escuela juanito mora porras.

Design and inspection of Fire detection and suppression system. Size: 3 154 m²

Caja costarricense de seguro social.

Design and inspection of Fire detection and suppression system for the disposal collection center. Size 1037m².

Calle nicata sociedad anónima

Procter & gamble interamericas de costa rica.

Design and inspection of Fire detection and suppression system for the interior construction of Procter & Gamble Size 3 000 m².

Junta administrativa liceo de chacarita.

Design and inspection of Fire detection and suppression system for the new highschool in Chacaritar. Size 11,390m².

Planta Krypton

Design and inspection of Fire detection and suppression system and infrastructure for the new Krypton industrial plant. Size 4311 m².

Administradora bambú sociedad anónima .

Design and inspection of Fire detection and suppression system for Comercial area and entrepreneur center of Siloparkr. Size 2 495m².



04.

PROJECT UNDERSTANDING



The KICK OFF

Consider the customer needs, Site conditions, project constrains and legal requirements

Brings together the ideas and concepts which provide a holistic solution to the problem

Quantitative and qualitative evaluation of proposals

30 % DESIGN REVIEW

Basis of Design

General Load Estimation

Long Lead Item Definition

Systems General Layout

60 % DESIGN REVIEW

One Line Diagrams

Schedule and

Submittals of LLI

Bidding type layouts

Space requirements

Initial system coordination

90% DESIGN REVIEW

Documents for bidding process

Scope of Work

Sequence of Operation

Technical Specifications

BIDDING AND PERMIT PROCESS

IFC DOCUMENTS

IFC DOCUMENTS

Approval by authorities

Revision of Construction Bids

Integration of Value Engineering and clarifications

Customer approval

DEFINE THE CONCEPT

DEFINE THE TYPE OF SYSTEMS, LAYOUTS AND GENERAL LOADS

DEFINE LLI, ONE LINES AND INITIAL COST ESTIMATION

BEGINNING OF PERMIT AND BIDDING

CONSTRUCTION DOCUMENTS

GOALS

Approach

PLANNING

RESPONSIBLE	ROLES	TOOLS
Director and/or Senior Engineer	Define the concepts Define the delivery schedule Define the scope work Provide relevant information in terms of needs, constraints, expectation Revise manpower	Program- ming templates
Project Engineer	Estimates the manpower	
Draftsmen Director	Estimates the manpower	
Scheduler	Revise the manpower resources and allocates the staff to meet schedule	Manpower Balance worksheet

MONITORING

RESPONSIBLE	ROLES	TOOLS
Director and/or Senior Engineer	Revision of design progress Revision of design quality Decision on manpower allocation and/or re-organization of duties	Quality control templates Scheduler report
Project Engineer	Design and revision	Design suites, codes, standards
Draftsmen Director	Drawing coordination	
Scheduler	Provides progress reports to Director on weekly basis Prepares report on working load and highlights to Director organization of staff to meet schedule	Programming templates Manpower Balance worksheet

EVALUATION

RESPONSIBLE	ROLES	TOOLS
Director and/or Senior Engineer	Wrap up information and defines in conjunction with project staff a lessons learned plan and improvement considerations	LL Staff meeting Agenda
Project Engineer	Provides project information on quantity of drawings, reworking	Control templates
Draftsmen Director	Provides project information on quantity of drawings, reworking	Control templates
Scheduler	Provides a summary of the project in terms of schedule and manpower	Summary report

Standards and Methodology



5

OUR FIRM /
TEAM ATTRIBUTE

- 1 We are customer oriented.
- 2 We believe in teamwork.
- 3 We are committed to quality, time and cost.
- 4 We seek the customer satisfaction and longterm relationship.
- 5 We provide added value that leads to improvements in business productivity.
- 6 We apply our extensive international experience in all phases of the project.
- 7 We seek efficiency and sustainability in our projects. We belong to USGBC and LEED certification.
- 8 We develop our projects under the highest quality standards ISO 9001:2008
- 9 We create trends. We apply the most modern facilities and most innovative designs.

Our Strengths

Analysis and conceptualization of projects from the perspective of good operational maintenance.

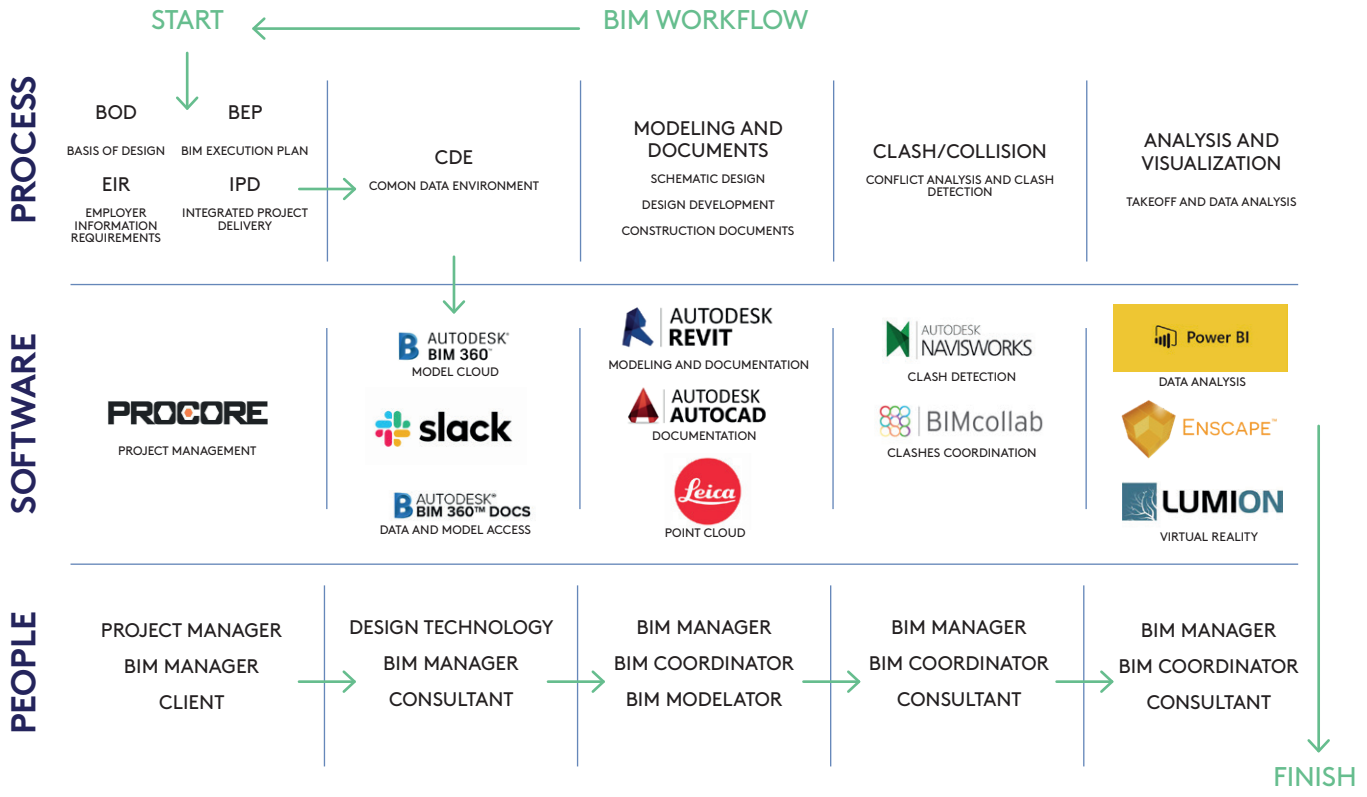
Professionals with international development in different types of projects, which will be your personal contacts.

Project Protafolio of wide complexity resolved in time and to the satisfaction of the clients. Application of technologies for the development, monitoring and quality control of projects.

We offer advice on direct contracts with suppliers and our client for a good management of budgets.

PROJECT MANAGER NAVISWORK + PROCORE

Architectural	Revit BIM Lumion
Structural engineering	Saaab
Electrical engineering Plumbing engineering and Fire protection	ETAP_ power system simulation Revit -BIM Dialux- lighting analysis Scheider Fast Quote
Mechanical Engineering	Revit BIM CFD
	Tool BOX



MANGLAR DESIGN COLLECTIVE



PROCORE



Apame is Latin-
American Champion
Certified

PM Operation Development

Projects are developed under a cloud-based platform for project management categorize as one of the best global project's development app, PROCORE. Procure connects people, applications, and devices through a unified platform that provide the best tools to secure an optimal project development through data tracking, task visualization, tracking and budget management, key elements to manage conscious risk assessment and a quality project development. Procure compiles tools for Project Management, Project Finance, Quality and Safety, and Productivity for all its projects.

Project users, clients, designers, owners, inspectors, are offered a platform where they can store, share and manage plans. An intuitive dashboard controls all team members' items on going tasks as follows:

- RFI (Request for information)
- Who is delaying submittals
- Overdue days on the project schedule.
- Multiple project tasks status in real time.
- Observations pending with a resolution.
- Meetings items pending for closure with its corresponding responsible resource.



RFIs



Specifications



Tasks



Submittals



Schedule

Connectivity



Change Events



Commitments



Inspections



Instructions



Daily Log



Directory



Meetings



Models



Documents



Drawings



Observations



Photos



Forms



Incidents



Prime Contracts



Punch List



GENERAL
CONTRACTOR



DESIGNERS



SUBCONTRACTORS



CONSTRUCTION
MANAGERS



OWNERS

CONTACT PERSON

Ing. Jose Eduardo Arce

Email: jose.arce@grupoabccr.com

Phone: +506 8322-2221

Arch. Gonzalo Peña

Email: gpena@apamedesign.com

Phone: +506 8319-8212